

Rates

Table with columns: Instrumento, TNA, 10/05/2021. Rows include Caudón 7d, Caudón 30d, BADLAR Priv. (>\$1mm), TM20 Priv. (>\$20mm), TPM - Leliq 7D, Pases Pasivos 7D.

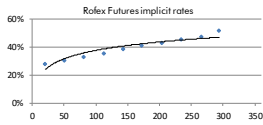
BCRAA3500 USD \$93,925

Table with columns: Day, %Change, Annualized. Rows show rates for 7d, 31d, 61d, 89d, 181d, 367d.

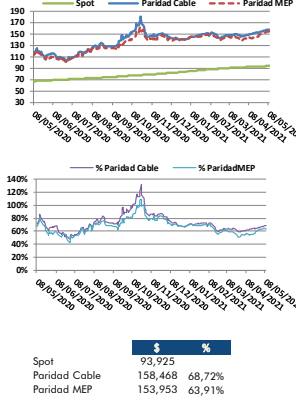
Reflex - ARS/USD Futures

Table with columns: Futures, Maturity, Days, USD, Rates, -d1, Ch, Op. I. Rows list various futures contracts like DLR052021, DLR062021, etc.

2.815



ARS - USD



Bonds

Table with columns: Bond, Code, Amt Out, Coupon, Price, YTM, MD, Maturity. Title: Sovereign Bond Inflation Indexed

Table with columns: Bond, Code, Amt Out, Coupon, Price, YTM, MD, Maturity. Rows include LeCer 05-21, Boncer 07-21, etc.

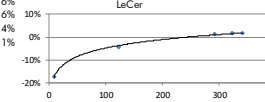
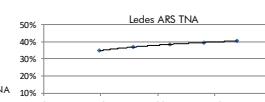
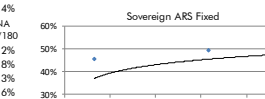
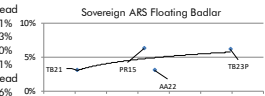
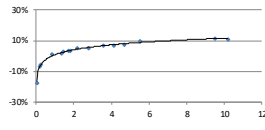
Table with columns: Bond, Code, Amt Out, Coupon, Price, YTM, MD, Maturity. Rows include LeCer ARS Floating Badlar, Boncer Ago 21, etc.

Table with columns: Bond, Code, Amt Out, Coupon, Price, YTM, MD, Maturity. Rows include Bonte \$ Oct 21, Bonte \$ May 22, etc.

Table with columns: Lades ARS, Amt Out, Price, TNA, Days, Maturity. Rows include S30J1, S30L1, S31G1, etc.

Table with columns: LeCer ARS, Days, Amt Out, BP+, Price, Spread, MD, Maturity. Rows include S21Y1, S3301, S3301, etc.

Table with columns: LeCer ARS Inflation Indexed, Amt Out, Price, YTM, Days, Maturity. Rows include X21Y1, X13S1, X28F2, etc.



Bonds

Table with columns: Bond, Code, Amt Out, Coupon, Price (1), YTM, MD, Maturity. Title: Sovereign ext. law USD

Table with columns: Bond, Code, Amt Out, Coupon, Price (2), YTM, MD, Maturity. Title: Sovereign Arg. law USD

Table with columns: Bond, Code, Amt Out, Coupon, Price, YTM, MD, Maturity. Title: Sovereign Arg. law USD Linked

Table with columns: Bond, Code, Amt Out, Coupon, Price, YTM, MD, Maturity. Title: Sub-Sovereign USD (3)

Table with columns: Bond, Code, Amt Out, Coupon, Price, YTM, MD, Maturity. Title: Corporate USD*

Table with columns: Bond, Code, Amt Out, Coupon, Price, YTM, MD, Maturity. Title: Corporate USD*

Table with columns: Bond, Code, Amt Out, Coupon, Price, YTM, MD, Maturity. Title: Corporate USD*

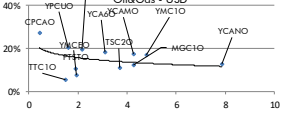
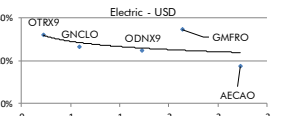
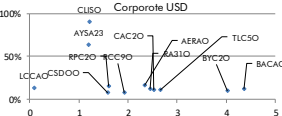
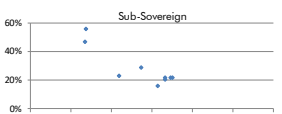
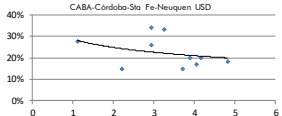
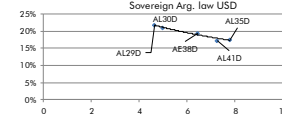
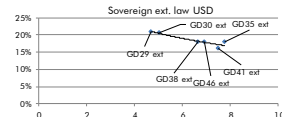
Table with columns: Bond, Code, Amt Out, Coupon, Price, YTM, MD, Maturity. Title: Corporate USD*

Table with columns: Bond, Code, Amt Out, Coupon, Price, YTM, MD, Maturity. Title: Corporate USD*

Table with columns: Bond, Code, Amt Out, Coupon, Price, YTM, MD, Maturity. Title: Corporate USD*

Table with columns: Bond, Code, Amt Out, Coupon, Price, YTM, MD, Maturity. Title: Corporate USD*

** Dirty Price ** Callable Bond - Yield to Maturity



El presente documento ha sido realizado por Argenfunds S.A. con fines estrictamente informativos. No debe ser tomado como una invitación a suscribir cotapartes ni como una oferta de compra o venta de valores. El documento se ha realizado con fuentes de información consideradas confiables, pero la empresa no puede garantizar la exactitud de las mismas. Los fondos comunes de inversión están sometidos a variaciones en los precios de los activos que pueden afectar su rendimiento. Los rendimientos pasados de los fondos comunes de inversión no garantizan el desempeño futuro de los mismos. Las inversiones en cotapartes del Fondo no constituyen depósitos en Banco Macro S.A. a los fines de la Ley de Entidades Financieras ni cuentan con ninguna de las garantías que tales depósitos a la vista o a plazo pueden gozar de acuerdo con la legislación y reglamentación aplicables en materia de depósitos en entidades financieras. Asimismo, Banco Macro S.A. se encuentra impedida por normas del Banco Central de la República Argentina de asumir, tácita o expresamente, compromiso alguno en cuanto al mantenimiento, en cualquier momento, del valor del capital invertido, al rendimiento, al valor del rescate de la cuota partes o al otorgamiento de liquidez a tal fin. Gráficos de Elaboración propia. Fuentes Reflex CAFCI y Bolsar